

screen



Screen Innovations®

9715-B Burnet Rd. Ste 400  
Austin TX, 78758  
screeninnovations.com

For sales inquiries please contact:  
sales@screeninnovations.com  
512-832-6939

For press related inquiries contact:  
Nicoll Public Relations  
lucette@nicollpr.com

moto

fixed



Zero-G\*



Solo\* Pro



Solo\*



Transformer\*



Zero Edge\* Pro



Zero Edge\*

# classic



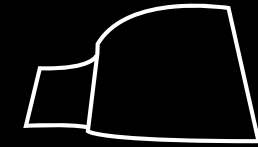
7 Zero Edge®



7 Fixed



5 Motorized



X Series



5 Zero Edge®



5 Fixed



3 Motorized



3 Fixed



1 Motorized



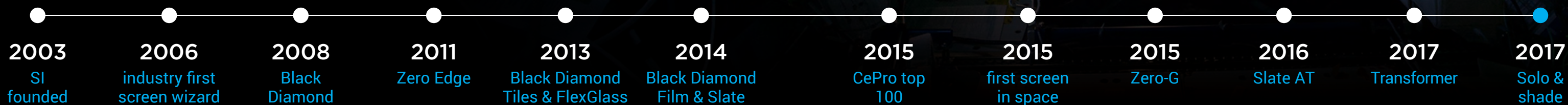
1 Fixed



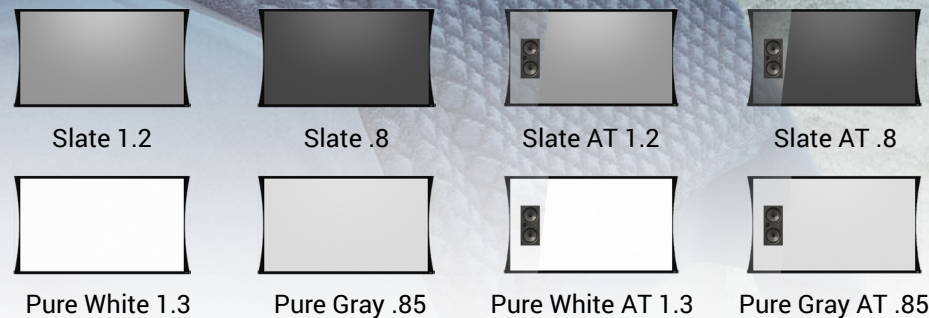
# the sky is not the limit

We have always been, and always will be about experiences—by creating unique products to separate you from the noise, simplifying your life, and together building a non-traditional family in an industry that has been stagnant for years.

Our passion for experiences, however, does not end with the absolute best, most unique, and innovative screens in the galaxy, but by also partnering our dealers with a forward thinking company that actually cares. We are not just in the business of revolutionary product development, we're in the business of revolutionary partner development.



zero-g®



# zero-g is levitating

Think Rollable Television®. When watching the game or your favorite movie, Zero-G drops out of the case and expands at a preset location giving you a “levitating” image, suspended by cables.

## simple

We ensured that the installation of Zero-G is simple and smooth by engineering features such as removable PCB and upper motor lift tubes, factory pre-programmed bomb-bay doors (flush unit only), and automatic upper limits via optical sensors.

## take back your room

You paid for your view. Don't re-arrange your room just so you can see the flat panel television. With Zero-G you can drop your screen in front of a bay of windows, or art-deco wall where you never could have placed a flat-panel television.

## unique

When you buy a Zero-G, you are buying something that does not exist anywhere else. It is uniquely suited to overcoming major challenges associated with the typical viewing experience.



optional cord colors



### Motors

- Somfy Gen 1 Quiet Motor®
- Butyl Vibration Isolation

### Materials

Slate / Slate AT / Pure / Pure AT

### Aspect Ratios

16:9 / 16:10 / 2.35:1 / Custom

### Sizes\*

- Max: 160" (4064mm) in 16:9
- Max: 160" (4064mm) in 2.35:1
- Available in 1-inch increments

### Case Specifications

- Flush or external configuration
- Black or White color options for external case
- Top side recessed electrical control cable access
- Optional separated shipping for case and material roll/motor assembly.
- Safety clips on external fascia

### Installation / Adjustment

Material roll pre-installed from the factory.\*\* Removable upper motor lift tube with single pin release. PCB is slide removable from the case. Flush doors are pre-programmed from the factory. Automatic upper limit by optical sensor.

\*All sizes are measured diagonally.

solo<sup>®</sup> pro

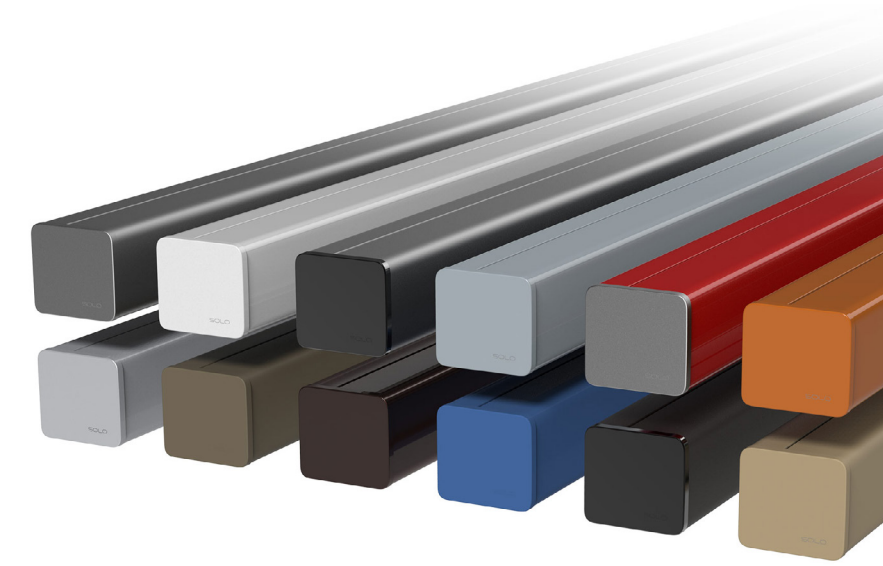


# rollable zero edge

Zero Edge meets a custom, motorized, portable cassette. Solo Pro is rollable Zero Edge with 2 years on a single charge.

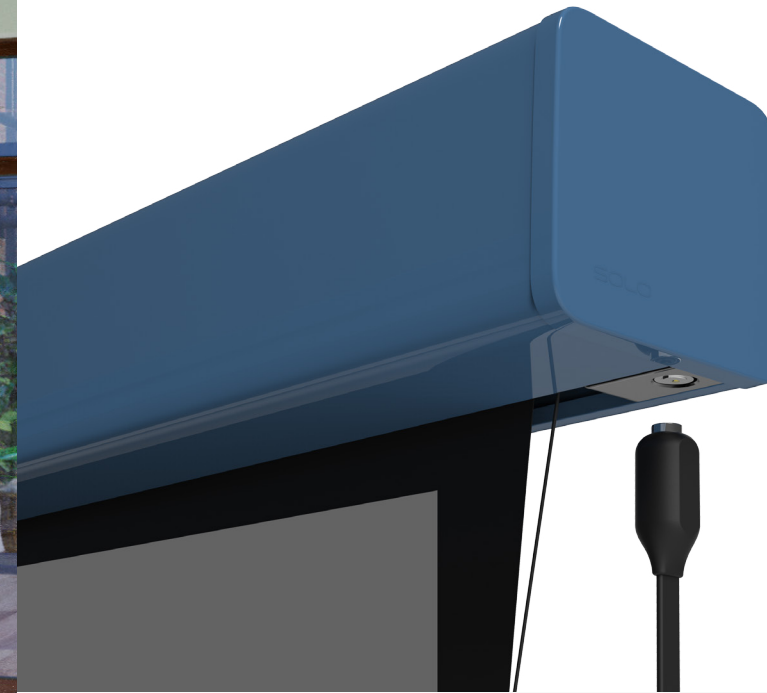
## wireless

At Solo Pro's core is an intelligent lithium-powered motor that is capable of being recharged 500 times, lasting 2 years on a single cycle. To recharge, simply click the magnetic power cable to the cassette and you're done.



## color matters

Our in-house powder coating facilities enable a wide variety of color options for Solo Pro's cassette. Closely match your wall color to one of 12 color options to further enhance the "Zero Edge" look, making Solo as unobtrusive as possible on the viewing experience.



### Motor

- Proprietary lithium powered rechargeable motor
- Somfy ST30 24v

### Color Options

White / Warm White / Dark Gray / Char Brown / Taupe / Black / Teal / Slate Blue / Clear Anodized / Red / Blue / Orange

### Materials

Slate / Slate AT / Pure / Pure AT / 360

### Aspect Ratios

16:9 / 16:10

### Sizes\*

- Max: 120" (3048mm) in 16:9
- Available in standard sizes only.

All sizes are measured diagonally. Some materials may be limited in size. All dimensions are listed as seamless.

### Installation / Adjustment

- Drop is adjustable in the field up to 12" (305mm).
- Cassette to be installed by mounting to any SOLO or recommended third-party accessories.

### Accessories

- Standard: (2) Sets of Quick Release Bracket / (1) Safety Bracket / (1) SOLO Control Remote
- Optional: Quick Release Bracket / Adaptive Bracket / Safety Bracket / Ceiling Bracket / SOLO Control / SOLO Remote / Charging Cable

solo®

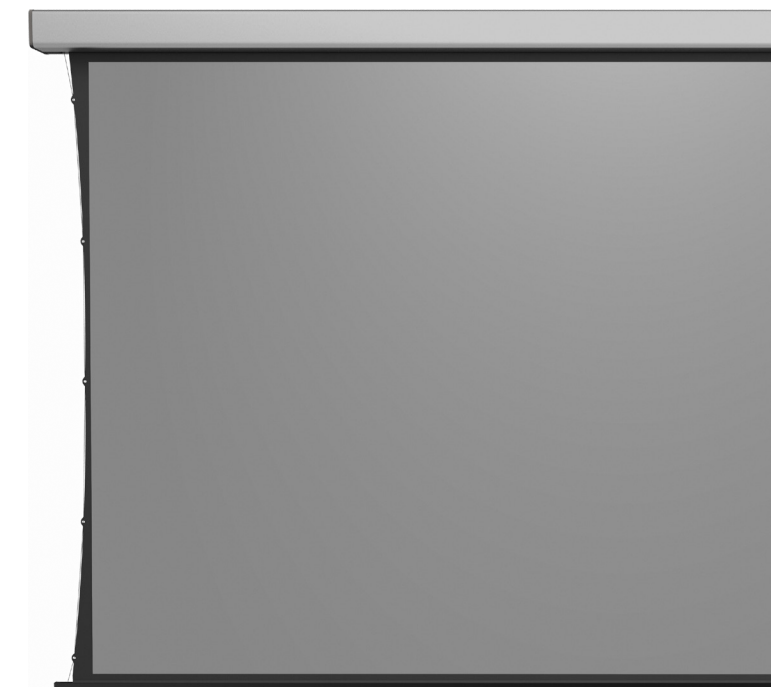


# zero edge, made rollable

Imagine a Zero Edge projection screen that disappears into a 2 3/4" clear anodized cassette. Imagine being able to take the cassette anywhere. Meet Solo, a wireless, motorized, Zero Edge screen that can run for 2 years on a single charge.

## portable

Wherever you go, take Solo with you. We designed it to be lightweight and simple enough to adapt to an enormous array of mounting application such as ceiling tiles, griplock, or even suction cup brackets (our favorite.)



## wireless

Solo is completely wireless thanks to the intelligent lithium-powered motor contained within its clear anodized cassette. When charging becomes necessary, simply click our magnetic cable into Solo's charging port.



### Motor

Proprietary lithium powered rechargeable motor

### Color Option

Clear Anodized

### Materials

Slate

### Aspect Ratios

16:9 / 16:10

### Sizes\*

- 80" (2032mm) / 90" (2286mm) / 100" (2540mm)
- Available in standard sizes only.

All sizes are measured diagonally. Some materials may be limited in size. All dimensions are listed as seamless.

### Installation / Adjustment

- Drop is adjustable in the field up to 12" (305mm).
- Cassette to be installed by mounting to any SOLO or recommended third-party accessories.

### Accessories

- Standard: (2) Sets of Quick Release Bracket / (1) Safety Bracket / (1) SOLO Control Remote
- Optional: Quick Release Bracket / Adaptive Bracket / Safety Bracket / Ceiling Bracket / SOLO Control / SOLO Remote / Charging Cable



transformer®



# the perfect ratio every time

Whether you're watching 16:9, 17:9, 2.40:1, or anything in-between – Transformer fits. With our proprietary telescoping frame system, your viewing experience will be the best possible, every time.

## masking, without masking.

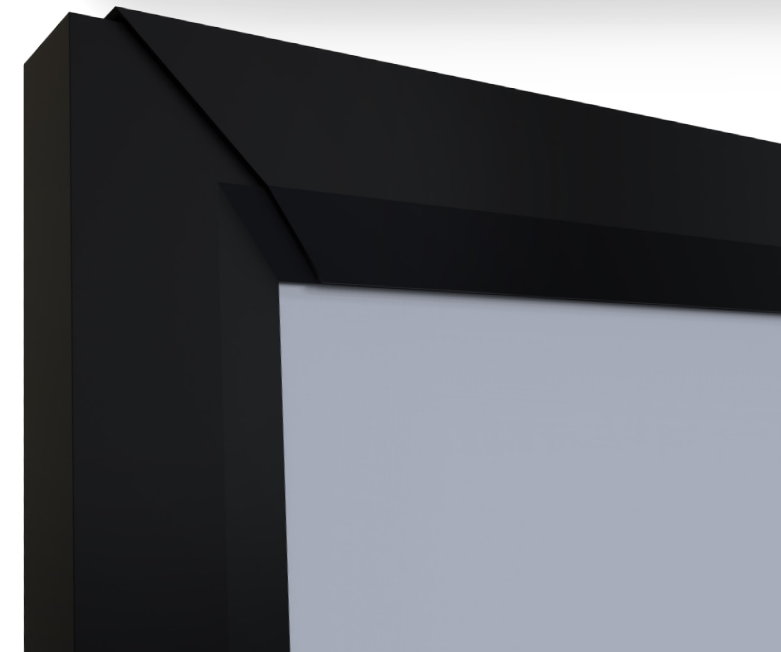
We weren't happy with the traditional masking screens, so we ditched the mask completely and created a screen that grows to the perfect ratio, matching your content.

## greatly simplified installation

Gone are the complex, and time-consuming on-site installations. With Transformer, due to our simplified method of packing and pre-construction, you can complete the unpack and install process without the headache that typically goes along with masking screens.

## a moving experience

The big screen experience with Transformer is something that truly must be seen, heard, and felt to understand. That is why we created it – to give people something they have never experienced before.



### Motor

Somfy Sonesse RS485 Quiet Motor®

### Frame

- 6-inch aluminum extrusion with hand-wrapped velvet
- Optional LED backlighting system

### Materials

Slate / Slate AT / Pure / Pure AT

### Sizes\*

- Max: 200" (5080mm) in 16:9
- Max: 255" (6477mm) in 2.40:1
- Available in 1-inch increments

### Aspect Ratios

Constant height / Variable width

### Installation / Adjustment

Two-piece installation not including screen material.

\*All sizes are measured diagonally.





zero edge<sup>®</sup> pro



# zero edge, your way

With nearly any option imaginable, Zero Edge Pro can be customized for a perfect fit in your space.

## two frame options

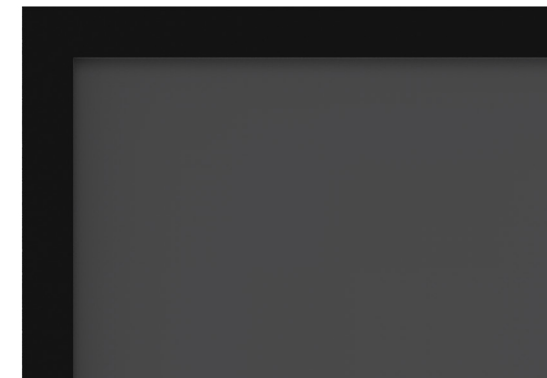
Two frame styles with our effortless, but secure attachment method make upgrading or modifying your frame at any time a breeze.

## make it yours

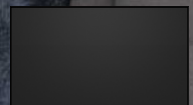
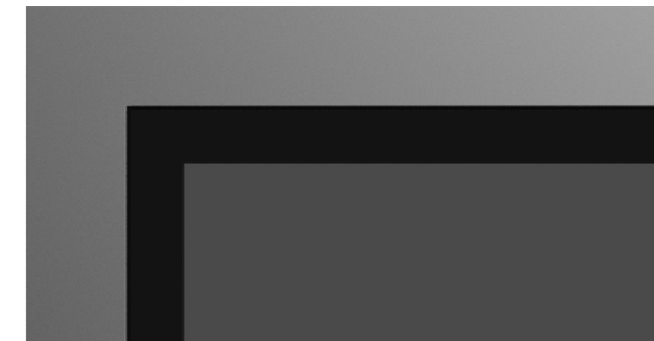
Choose a color that blends into your environment, or make your Zero Edge Pro frame stand out in the design of your space.

\* Available on "Medium" frame option only.

.5"



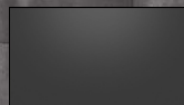
1.5"



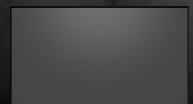
Black Diamond  
XL / 1.4 / .8



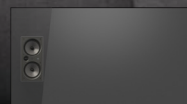
Solar  
XL / White / Gray



Short Throw  
.6



Slate  
XL / 1.2 / .8



Slate AT  
1.2 / .8



Pure  
White 1.3 / Gray .85



Pure AT  
White 1.3 / Gray .85



Maestro White  
1.1



### Frame

- Small: Aluminum extrusion with 1/2" (13mm) "Zero Edge" style bezel
- Medium: Aluminum extrusion with 1-1/2" (38mm) "Zero Edge" style bezel with 1/2" (13mm) velvet inlay.
- Built in LED channel for optional backlighting.

### Materials

Black Diamond / Slate / Slate AT / Short Throw / Pure / Pure AT

### Sizes\*

- Max: 200" (5080mm) in 16:9
- Max: 250" (6350mm) in 2.35:1
- Available in 1-inch increments

All sizes are measured diagonally. Some materials may be limited in size. All dimensions are listed as seamless.

### Aspect ratios

16:9 / 16:10 / 2.35:1 / custom

### Color Options

White / Warm White / Dark Gray / Char Brown / Taupe / Black / Teal / Slate Blue / Clear Anodized / Red / Blue / Orange

### Installation / Adjustment

Pre-assembled shipment: ships fully assembled up to 133" (3378mm.)

Unassembled shipment: ships unassembled requiring some assembly.

### Accessories

Backlight IP / IR Backlight / Flown Kit

zero edge®



# zero edge style

When we introduced Zero Edge to the world in 2011, it became the world's first fixed frame screen built to be incorporated into the design of a room.

## hand built

All of our screens are built by hand in Austin, Texas and Zero Edge is no exception. We strive for the absolute best quality and craftsmanship in every screen that we make.

## led backlight

Our optional LED Lighting accessory adds ambience behind the screen to fully complement the room's design and décor and to reduce eye strain for content with rapid transitions from dark to bright.

## shipping method

Zero Edge can be ordered pre-assembled or unassembled, giving you the option to complete your project according to what suits your needs most.



### Frame

- Aluminum extrusion with 3/8" (10mm) "Zero Edge" style bezel
- Built in LED channel for optional backlighting.

### Materials

Solar White / Solar Gray

### Sizes\*

- Max: 205" (5207mm) in 16:9
- Max: 260" (6604mm) in 2.35:1
- Standard sizes only

All sizes are measured diagonally. Some materials may be limited in size. All dimensions are listed as seamless.

### Aspect Ratios

16:9 / 16:10 / 2.35:1

### Installation / Adjustment

Pre-assembled shipment: ships fully assembled up to 133" (3378mm.)

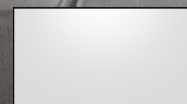
Unassembled shipment: ships unassembled requiring some assembly.

### Accessories

IR Backlight / Flown Kit



Solar White 1.3

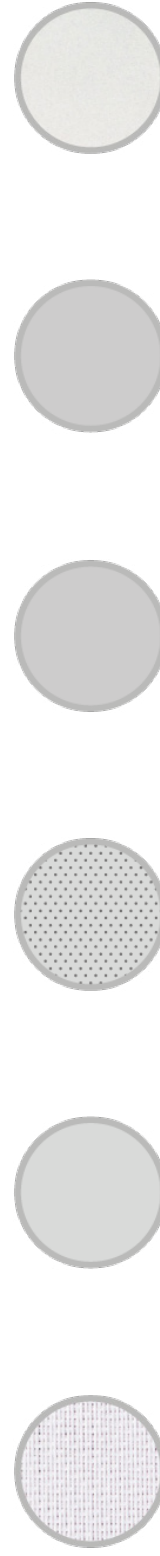


Solar Gray .85



# projection screen materials

front



Maestro White 1.1

Pure White 1.3 / Gray .85

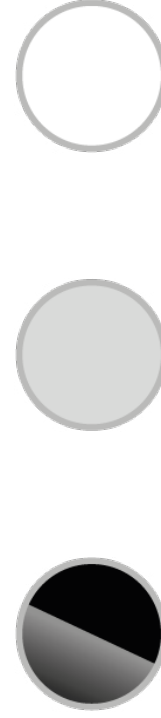
Pure AT White 1.3 / Gray .85

Solar White 1.3 / Gray .85

Solar XL / White / Gray

Gamma 1.1

rear



Black Diamond Film 1.4 / .8

FlexGlass .6

360 .85

ambient



Black Diamond XL / 1.4 / .8

Slate XL / 1.2 / .8

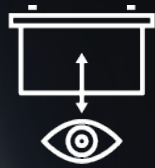
Slate AT 1.2 / .8

Short Throw (ST) .6



material	projection type	screen color	maximum size (in)	maximum size (mm)	gain	half gain	alr*	minimum throw	edge blend	rigidity	texture	flame resistant	acoustically transparent
Short Throw .6 (st)	front	Black	116 w x 60 h	2946 w x 1524 h	.6	85°	90%	0.1 x image width	●	rigid	fine	●	●
Black Diamond .8	front	Black	1800 w x 59 h	45720 w x 1499 h	.8	29°	90%	1.5 x image width	●	flexible, semi rigid, rigid	micro	●	●
Black Diamond 1.4	front	Dark Gray	1800 w x 59 h	45720 w x 1499 h	1.4	36°	85%	1.5 x image width	●	flexible, semi rigid, rigid	micro	●	●
Slate .8	front	Black	3600 w x 106 h	91440 w x 2692 h	.8	33°	65%	1.5 x image width	●	flexible	micro	●	●
Slate 1.2	front	Gunmetal	3600 w x 106 h	91440 w x 2692 h	1.2	38°	65%	1.5 x image width	●	flexible	micro	●	●
Slate AT .8	front	Black	3600 w x 106 h	91440 w x 2692 h	.8	35°	65%	1.5 x image width	●	flexible	micro	●	●
Slate AT 1.2	front	Gunmetal	3600 w x 106 h	91440 w x 2692 h	1.2	40°	65%	1.5 x image width	●	flexible	micro	●	●
FlexGlass Rear-Pro .6	rear	Gray	1212 w x 103 h	30785 w x 2616 h	.6	75°	60%	0.2 x image width	●	Semi Rigid	fine	●	●
BD Rear-Pro Film 1.4	rear	Dark Gray	1176 w x 60 h	29870 w x 1524 h	1.4	41°	55%	1.2 x image width	●	flexible, semi rigid, rigid	micro	●	●
BD Rear-Pro Film .8	rear	Black	1176 w x 60 h	29870 w x 1524 h	.8	37°	55%	1.2 x image width	●	flexible, semi rigid, rigid	micro	●	●
Pure White 1.3	front	White	3600 w x 106 h	91440 w x 2692 h	1.3	75°	15%	0.2 x image width	●	flexible	micro	●	●
Pure Gray .85	front	Gray	3600 w x 106 h	91440 w x 2692 h	.85	80°	15%	0.2 x image width	●	flexible	micro	●	●
Pure White AT 1.3	front	White	3600 w x 106 h	91440 w x 2692 h	1.3	75°	15%	0.2 x image width	●	flexible	micro	●	●
Pure Gray AT .85	front	Gray	3600 w x 106 h	91440 w x 2692 h	.85	80°	15%	0.2 x image width	●	flexible	micro	●	●
360 rear-pro .85	rear	White	3600 w x 106 h	91440 w x 2692 h	.85	80°	15%	0.2 x image width	●	flexible	fine	●	●
Solar Gray 1.3	front	White	3600 w x 106	91440 w x 2692 h	1.3	75°	10%	0.2 x image width	●	flexible	fine	●	●
Solar Gray .85	front	Gray	3600 w x 106 h	91440 w x 2692 h	.85	80°	10%	0.2 x image width	●	flexible	fine	●	●
Gamma 1.1	front	White	116 w x 65.2 h	2946 w x 1656 h	1.1	75°	10%	0.2 x image width	●	flexible	medium	●	●
Maestro White 1.1	front	White	1080 w x 124 h	27432 w x 3150 h	1.1	75°	10%	0.8 x image width	●	flexible	high	●	●

\*alr = ambient light rejection



### seating distance

Not sure how big of a screen you need based on your seating distance? With our seating distance calculator you can instantly get the correct screen sizes using the visual acuity scale established by the ITU (International Telecommunications Union) based on UHD/4k resolution.



### projector wizard

Will your projector fit the available space? What about your screen? To find out, use the Projector Wizard which includes specifications for every single projector ever made. Literally.



### screen wizard

After you've determined which projector and/or screen is appropriate for your space, you can then use our screen wizard tool to determine which screen material is best for your space. Simply enter your ambient light value you obtained by using the free Whitegoods app, your screen size and projector lumens and our calculator will recommend exactly which material will work for your environment.



### screen calculator

Once you know the material that is recommended for your space, our Screen Calculator will take that information and generate a PDF drawing of your screen in mere seconds, not weeks. You can then email the quote or print the PDF of your drawing directly from the calculator.

